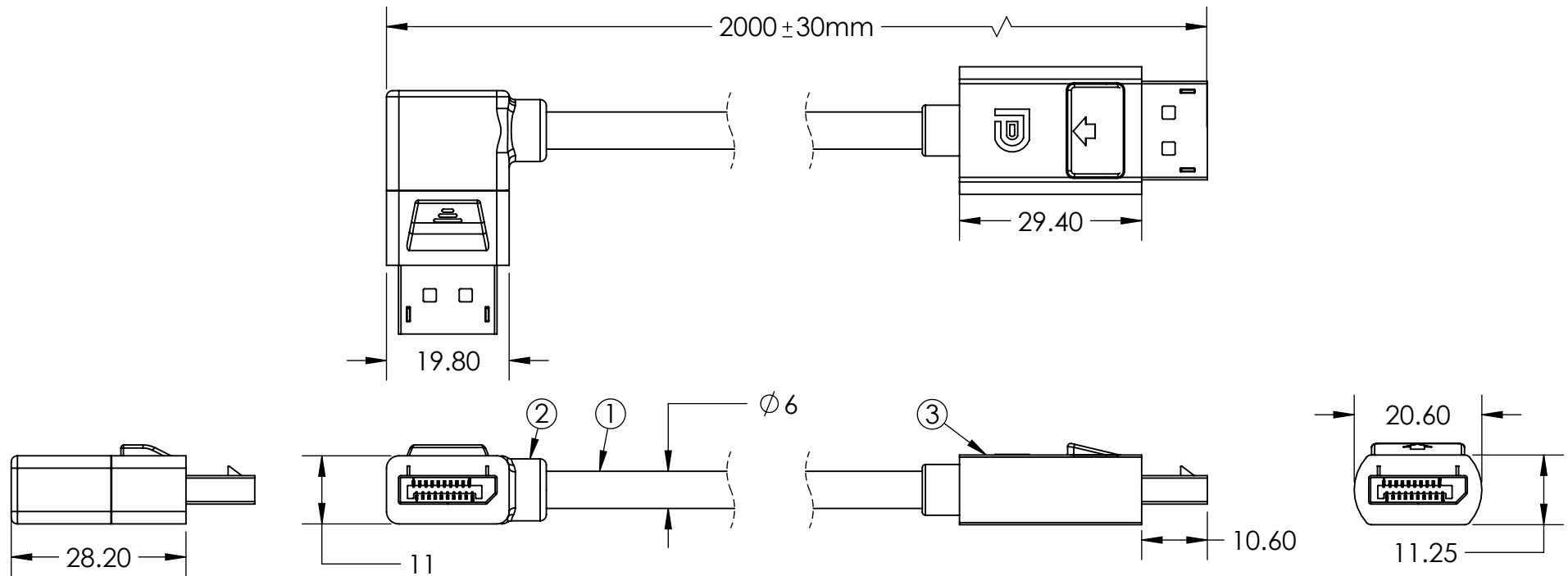


NEWNEX PROPRIETARY

THIS DOCUMENT AND THE DATA DISCLOSED HEREIN OR WITHIN IS NOT TO BE REPRODUCED, USED, OR DISCLOSED IN WHOLE OR PART TO ANYONE WITHOUT THE WRITTEN PERMISSION OF NEWNEX

COMPANY NAME**CUSTOMER SIGNATURE****DATE****COMMENTS:****Notes:**

1. Cable: DisplayPort 1.4 Cable, 6.0 ± 0.2mm O.D, PVC Jacket, Black.
2. Connector: Angled DisplayPort Male with Locking Latch Feature.
3. Connector: DisplayPort Male with Latch Locking Latch Feature.
4. Package: 1 Piece + PE Bag
5. RoHS Compliant

Newnex Technology Corp.



UNLESS OTHERWISE SPECIFIED
DIMENSIONS ARE IN MILLIMETERS
TOLERANCES ARE:

FRACTIONS DECIMALS ANGLES
± NA .XX ± 0.25
.XXX ± 0.125



SCALE:
1:1

REV.
A

DATE:
6/17/2025

TITLE:
Angled DisplayPort Male to DisplayPort
Male Cable, 2m.

DRAWN BY:
XW

APPROVED BY:

PART NUMBER:

DPW1DP1DPL1020

CHECKED BY:

SHEET 1 OF 1

REVISION COMMENTS:

Drawing generated

*100% OPEN, SHORT, MISWIRE TESTING

*RoHS compliant product

*Dimension in Parentheses refer as Basic Dimensions